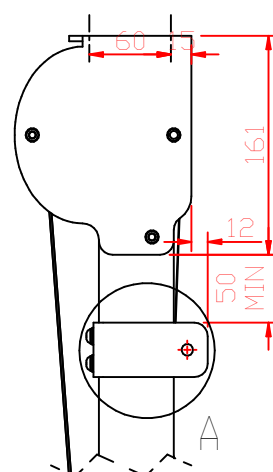
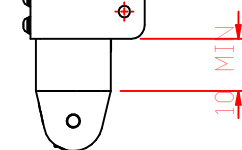


NOTES

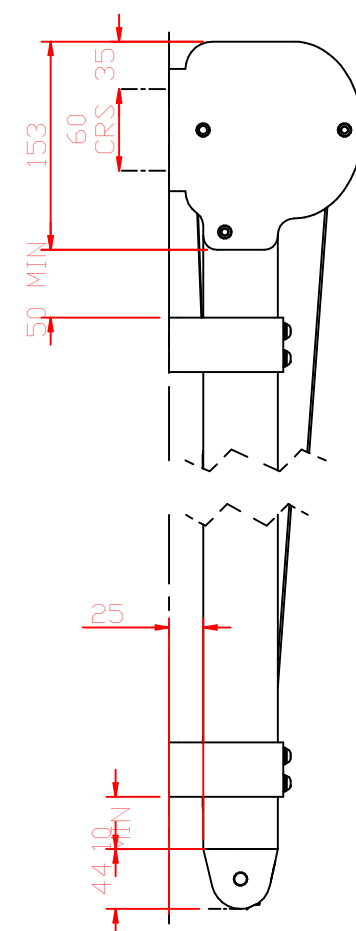
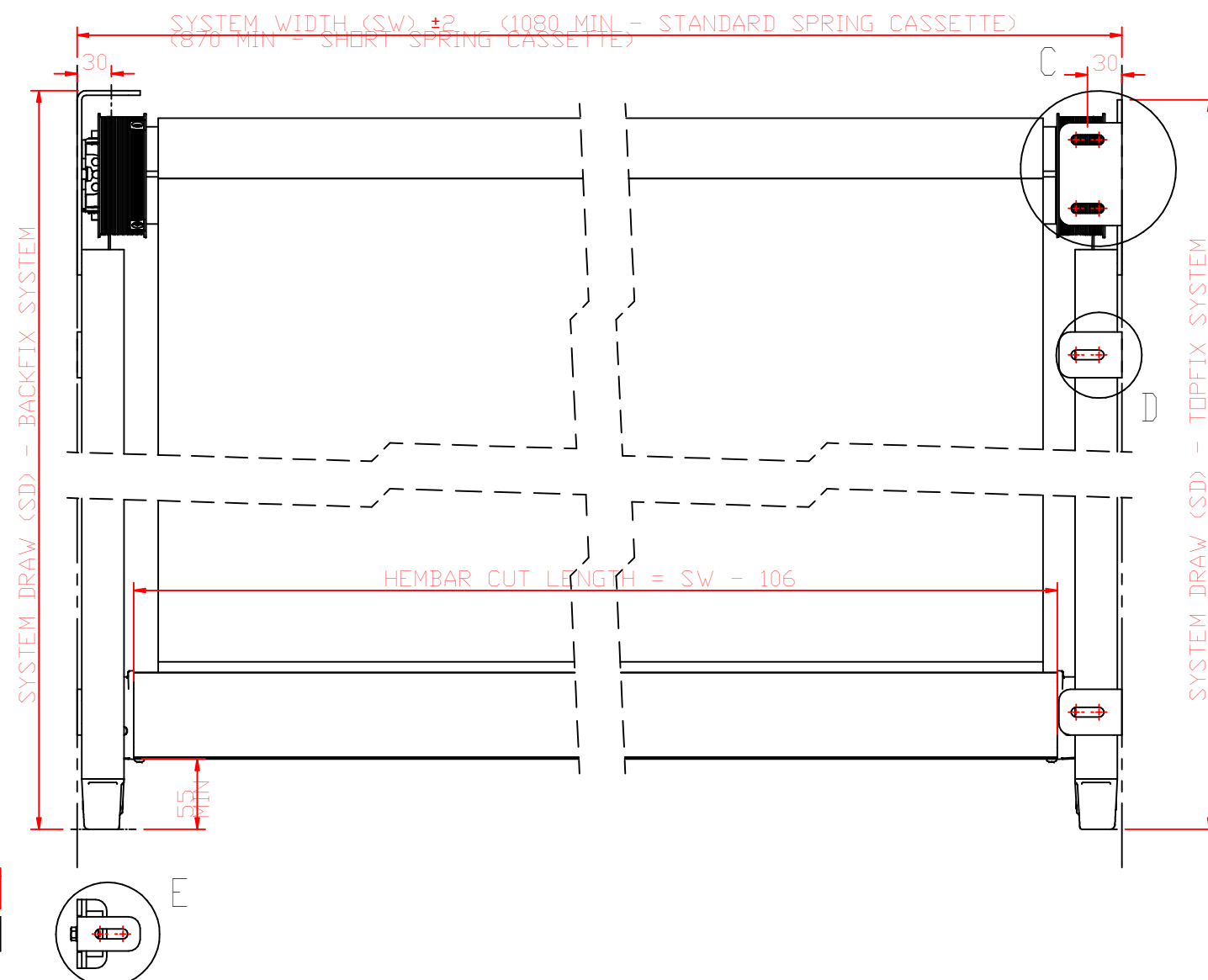
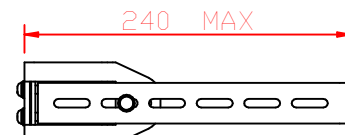
1. WHEN SW > 4000, HEAVY DUTY HEMBAR TO BE INSTALLED.
2. WHEN SD > 3000, RELIEVING ROLLER TO BE INSTALLED AT MID-DRAW. SEE GDP23041.
3. TWO TYPES OF SYSTEM FIXING ARE AVAILABLE - TOP FIX OR BACK FIX.
4. TWO TYPES OF SIDEGUIDE MOUNTING BRACKET ARE AVAILABLE - TOP FIX OR SIDE FIX. AN EXTENDED TOP FIX BRACKET IS ALSO AVAILABLE.
5. FOR BACK TO BACK INSTALLATION SEE GDP23042
6. MOUNTING TYPES MAY BE COMBINED LENGTHWISE WITHIN A SYSTEM E.G. BACK FIX SYSTEM WITH TOP FIX SIDEGUIDE MOUNTING BRACKETS



BACK FIX SYSTEM WITH SIDE FIX SIDEGUIDE MOUNTING BRACKETS. BRACKETS TO BE EVENLY SPACED ALONG SIDEGUIDE



EXTENDED TOPFIX SIDEGUIDE MOUNTING BRACKET



TOP FIX SYSTEM WITH TOP FIX SIDEGUIDE MOUNTING BRACKETS. BRACKETS TO BE EVENLY SPACED ALONG SIDEGUIDE

SIDEGUIDE MOUNTING BRACKET ASSEMBLIES REQUIRED PER SYSTEM

DRAW	QTY
< 2000	2 (FITTED AT RETURN PULLEY END OF SIDEGUIDE)
2000 - 3500	4
3500 - 5000	6
> 5000	8